

Instructions Retrofit Wall Support

SCHIEDEL

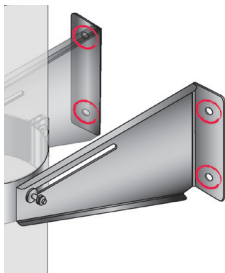


Lower the clamp band over the pipe length with the joint facing the wall.

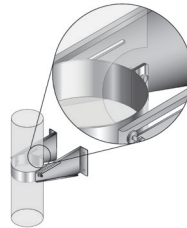
On the joint, ensure that the spring washer is between plain washer and the bolt head,



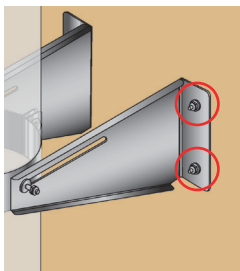
Attach the side brackets to the fixing bolts on the side of the band, but don't tighten.



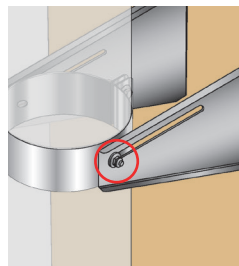
Mark up the hole positions for the brackets on the wall.



Tighten the two fixing bolts on the clamp band using a torque wrench up to a minimum of 10 N m (Newton-Meters).



Attach the side brackets to the wall using a method of fixing to ensure adequate attachment and support, i.e. shield anchors.



Fix the brackets to the bolts on the side of the clamp band using the locking nuts provided.

Schiedel Chimney Systems

Crowther Estate

Washington

Tyne & Wear NE38 0AQ

Tel. +44 (0)191 416 1150

sales.uk@schiedel.com

schiedel.com/uk

A **standard**
INDUSTRIES COMPANY